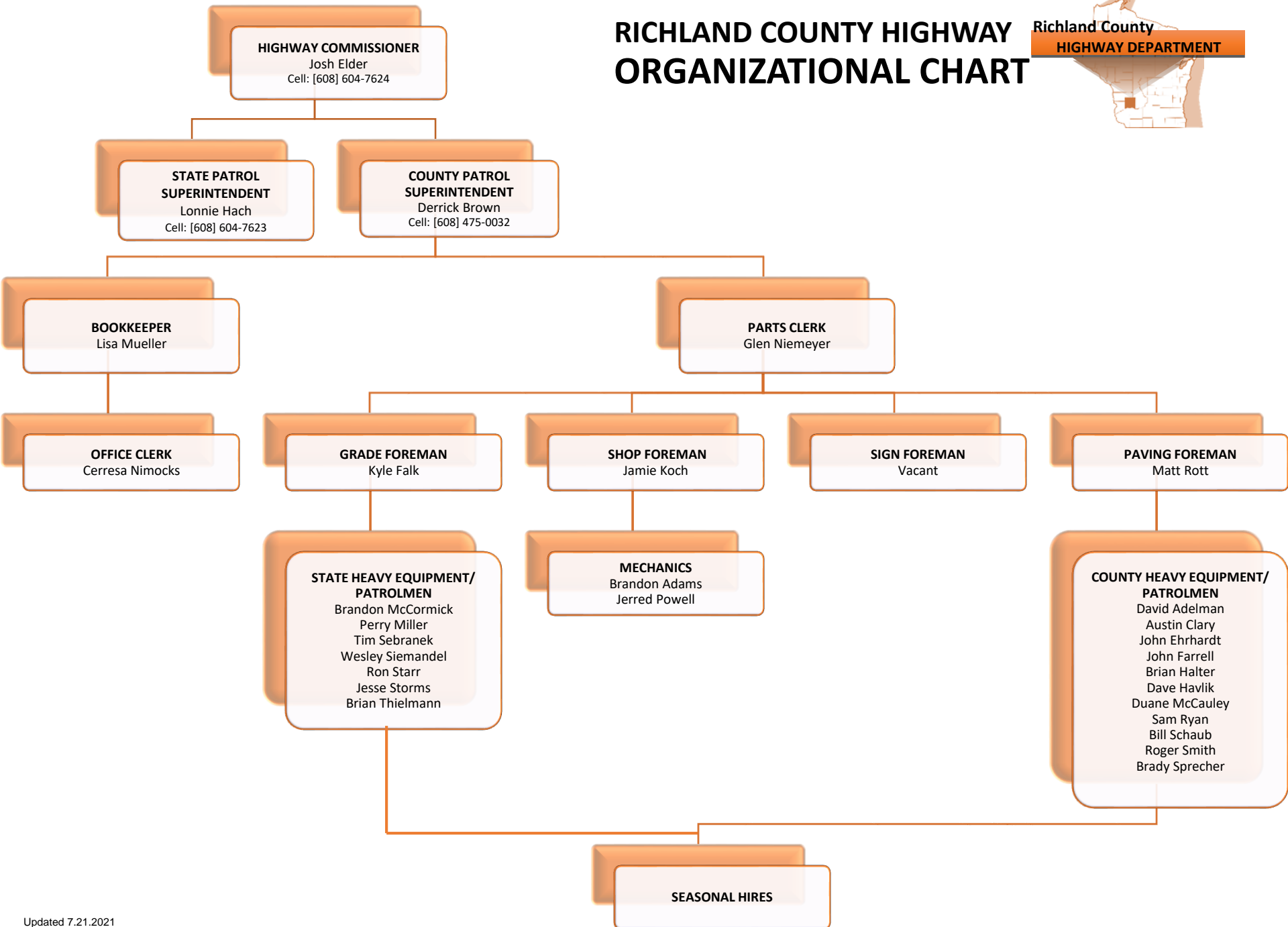


RICHLAND COUNTY HIGHWAY ORGANIZATIONAL CHART

Richland County
HIGHWAY DEPARTMENT



HIGHWAY COMMISSIONER

Josh Elder

Cell: [608] 604-7624

STATE PATROL SUPERINTENDENT

Lonnie Hach

Cell: [608] 604-7623

COUNTY PATROL SUPERINTENDENT

Derrick Brown

Cell: [608] 475-0032

BOOKKEEPER

Lisa Mueller

PARTS CLERK

Glen Niemeyer

OFFICE CLERK

Ceresca Nimocks

GRADE FOREMAN

Kyle Falk

SHOP FOREMAN

Jamie Koch

SIGN FOREMAN

Vacant

PAVING FOREMAN

Matt Rott

**STATE HEAVY EQUIPMENT/
PATROLMEN**

Brandon McCormick
Perry Miller
Tim Sebranek
Wesley Siemandel
Ron Starr
Jesse Storms
Brian Thielmann

MECHANICS

Brandon Adams
Jerred Powell

**COUNTY HEAVY EQUIPMENT/
PATROLMEN**

David Adelman
Austin Clary
John Ehrhardt
John Farrell
Brian Halter
Dave Havlik
Duane McCauley
Sam Ryan
Bill Schaub
Roger Smith
Brady Sprecher

SEASONAL HIRES